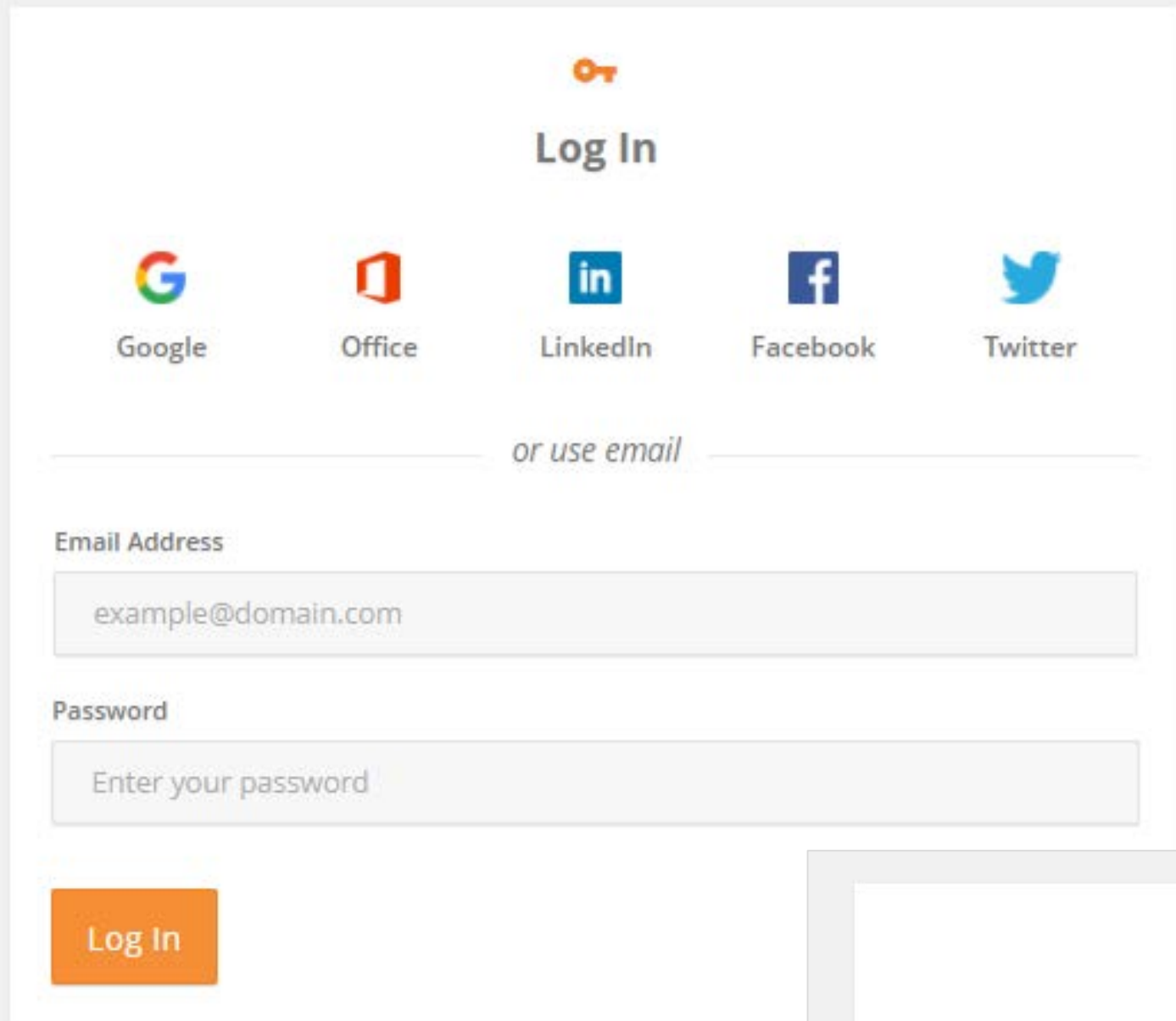


Forgot your Password? Reset It

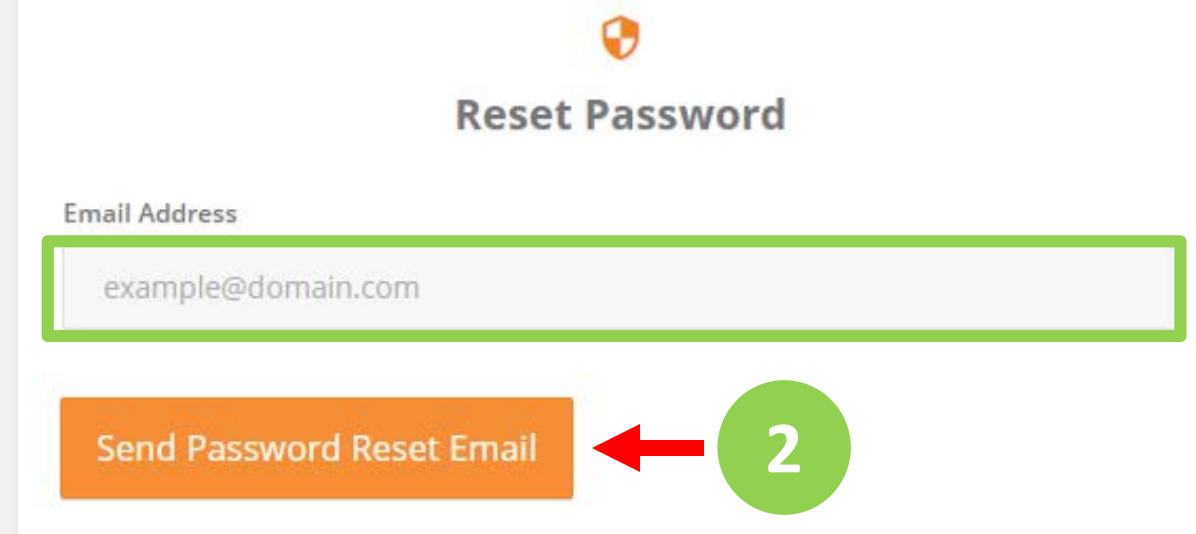


The screenshot shows the login interface. At the top, there is a key icon and the text "Log In". Below this are five social media icons: Google, Office, LinkedIn, Facebook, and Twitter. Underneath these icons is the text "or use email". There are two input fields: "Email Address" with the placeholder "example@domain.com" and "Password" with the placeholder "Enter your password". At the bottom left of the form is an orange "Log In" button.

Don't Have an Account? Register Now

Forgot your Password? Reset It

1



The screenshot shows the password reset interface. At the top, there is a shield icon and the text "Reset Password". Below this is an "Email Address" input field with the placeholder "example@domain.com". At the bottom of the form is an orange "Send Password Reset Email" button.

Send Password Reset Email

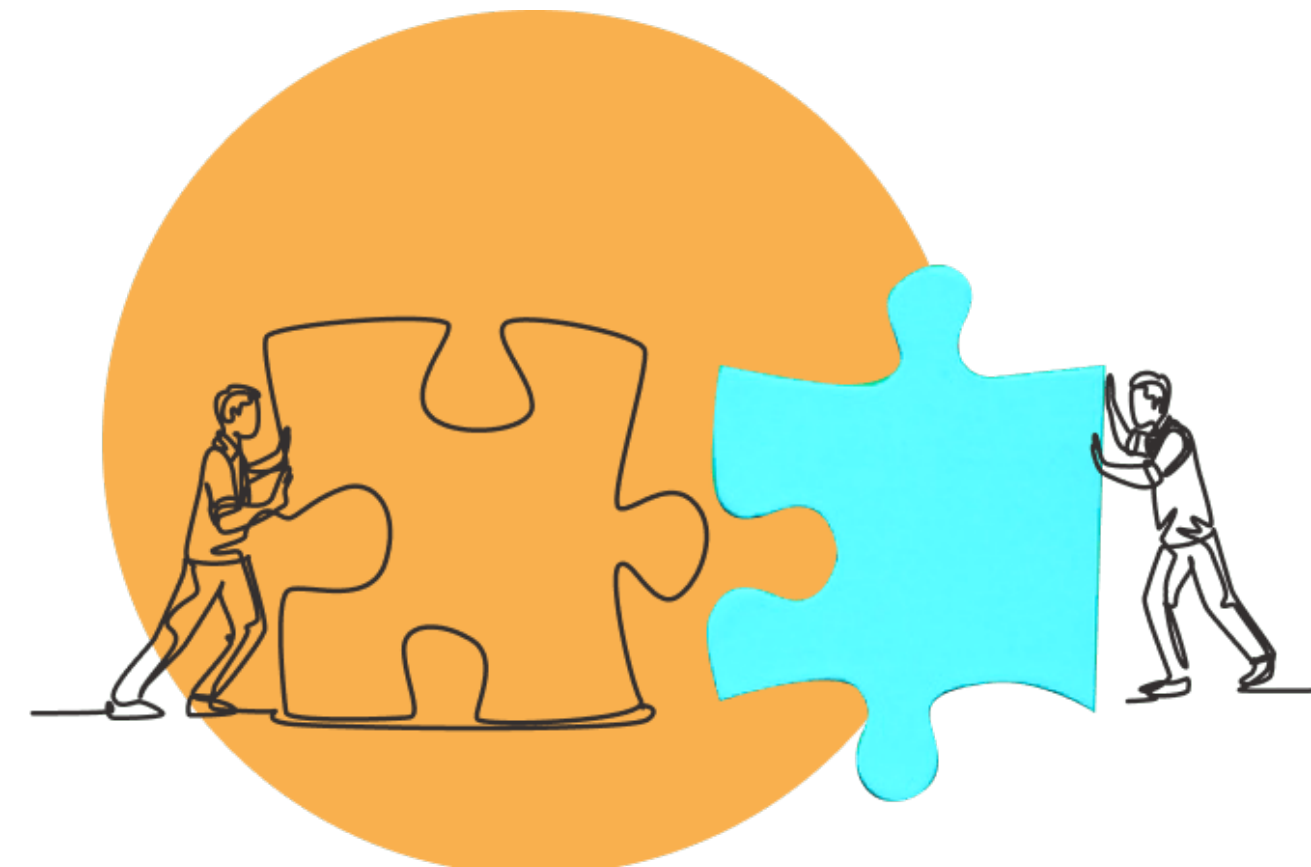
2

Don't Have an Account? Register Now

Already Have an Account? Log In Now

กรณีลืมรหัสผ่าน รบกวนทำตามขั้นตอนดังต่อไปนี้

- ไปที่หน้า Login URL : <https://opensesame.com/user/login>
- คลิกที่ “ Forgot your Password? Reset It ”
- ระบุชื่อบัญชีผู้ใช้ (Email Address) ลงในช่องว่าง
- คลิกที่ “ Send Password Reset Email ”



Forgot your Password? Reset It

New Message from OpenSesame



Need to reset your password?

supawee komnoy,

A password request was made for your OpenSesame account. Click the link below to reset your password:

<https://www.opensesame.com/user/reset/966709/1646457881/SaE9yLjzI8ytYLj...>

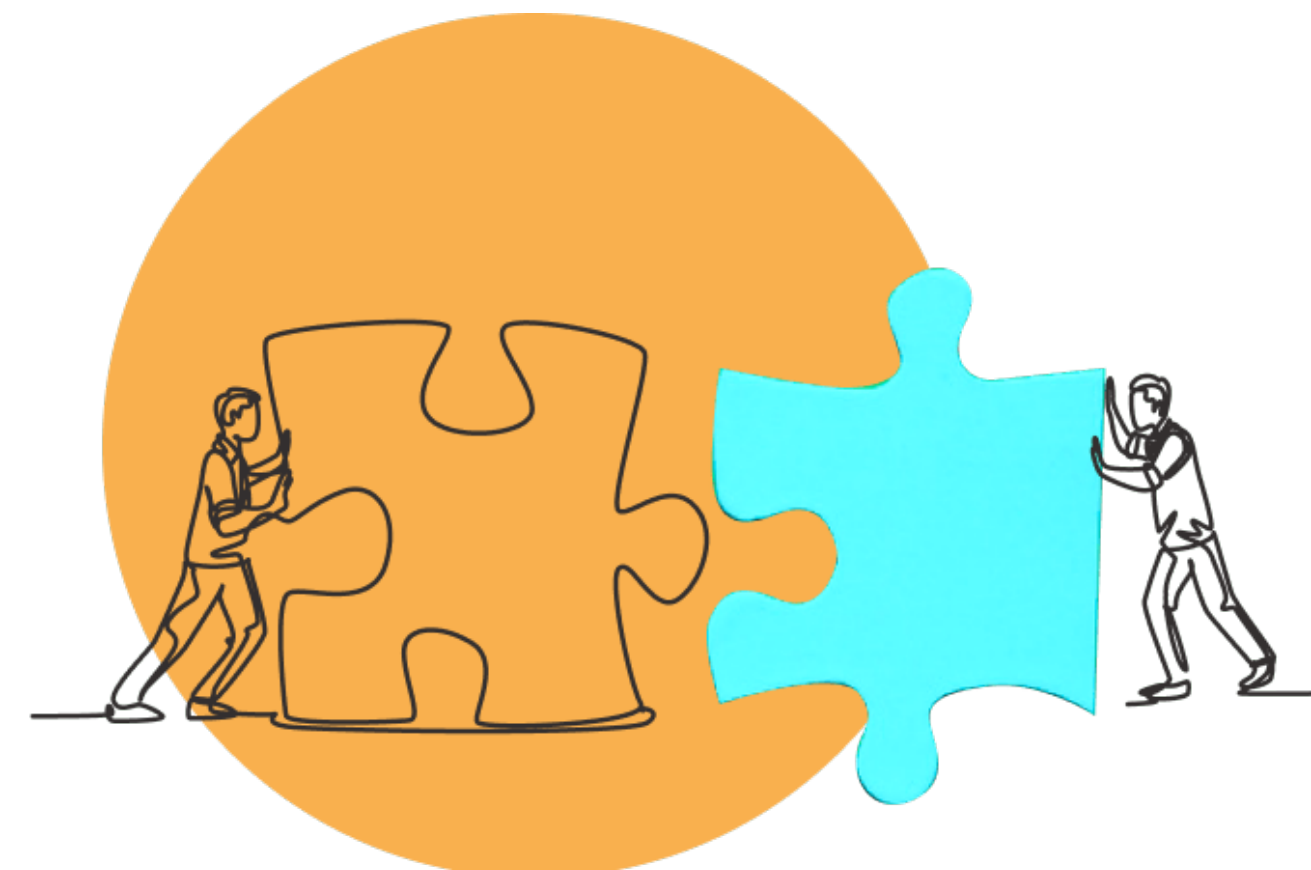
The above link will allow one-time login access where you can edit your account and reset your password. NOTE: You will need to enter your password twice (once in the "Password" field and once in the "Confirm Password" field), then scroll down and click save to save your new account password.

Happy training,

-The OpenSesame Team

PS: If you did not request a new password, or no longer need to change your password, simply ignore this email.

- ระบบจะส่งลิงก์เปลี่ยนรหัสผ่านไปยังอีเมลบัญชีผู้ใช้
- คลิกลิงก์ด้านล่างเพื่อรีเซ็ตรหัสผ่านของคุณ



Forgot your Password? Reset It

Create a New Password

New Password

Passwords must meet the following requirements:

Password must have at least 1 symbol(s).
Password must have upper and lower case letters.
Password cannot match 12 past passwords.
Password must have at least 8 character(s). Password must have at least 1 digit(s).

Password

Confirm password

Confirm New Password

Create a New Password

New Password

Passwords must meet the following requirements:

Password must have at least 1 symbol(s).
Password must have upper and lower case letters.
Password cannot match 12 past passwords.
Password must have at least 8 character(s). Password must have at least 1 digit(s).

Password

.....

Strong



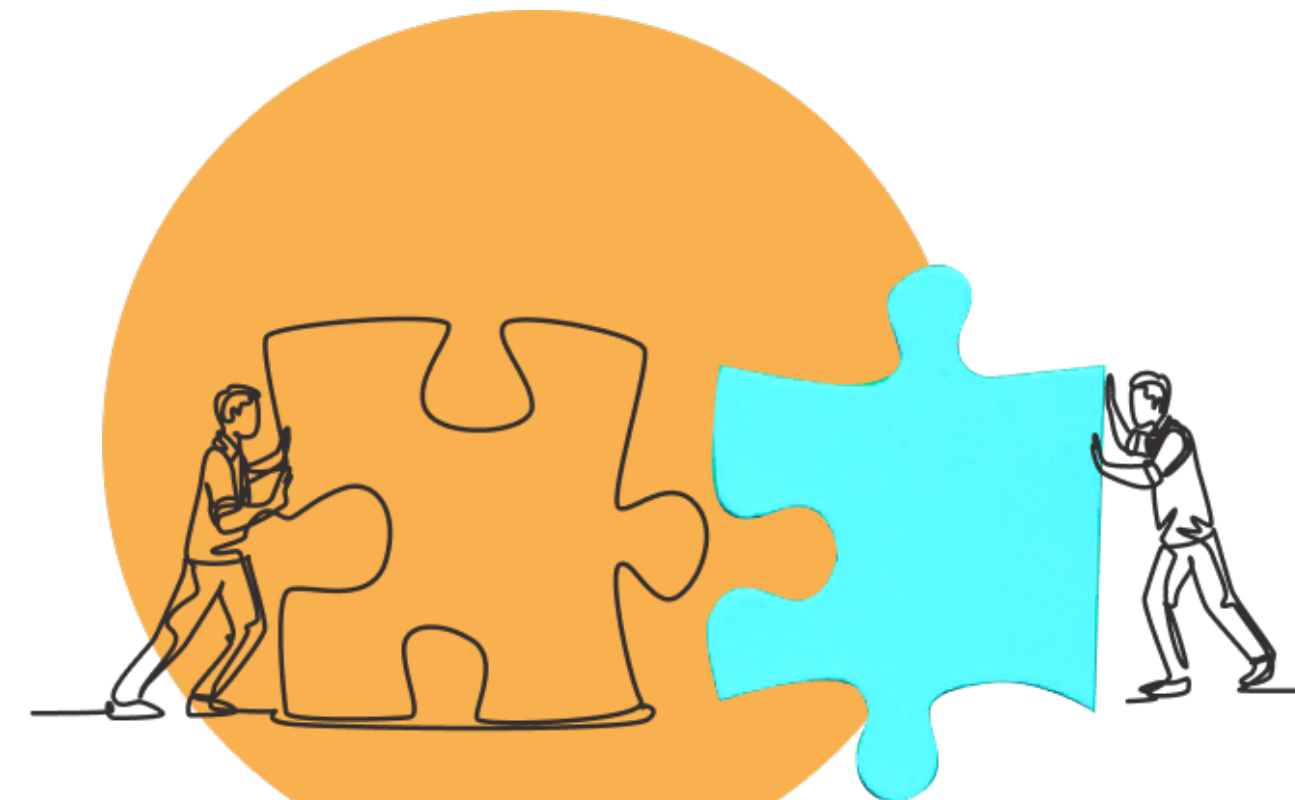
Confirm password

.....

Match 

Confirm New Password

- ✓ เงื่อนไขการตั้งรหัสผ่านใหม่
- รหัสผ่านต้องมีความยาวอย่างน้อย 8 ตัว ประกอบด้วย
 - ตัวอักษรภาษาอังกฤษพิมพ์ใหญ่อย่างน้อย 1 ตัว
 - ตัวอักษรภาษาอังกฤษพิมพ์เล็กอย่างน้อย 1 ตัว
 - ตัวเลขอย่างน้อย 1 ตัว
 - อักขระพิเศษอย่างน้อย 1 ตัว
- ❖ และจะต้องไม่ซ้ำกับรหัสผ่านที่เคยตั้งมาก่อนหน้านี้





Opensesame Support Team

Line ID: @learninghub.th



Email: support@applitech.co.th

Tel: 02-581-1222-5 / 081-350-8044

Thank you, and have fun learning with Opensesame!